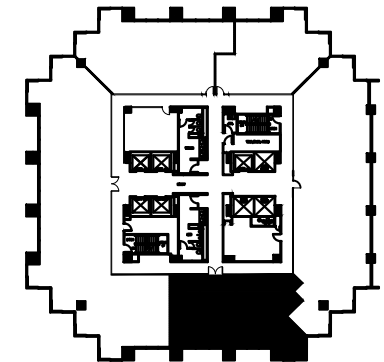


KEY PLAN



SUITE: 250  
RSF: 2,410



**KIM BROOKS**  
972.361.1122  
kim.brooks@transwestern.com

**JUSTIN MILLER**  
972.361.1134  
justin.miller@transwestern.com

**SCOTT WALKER**  
972.774.2504  
scott.walker@transwestern.com

