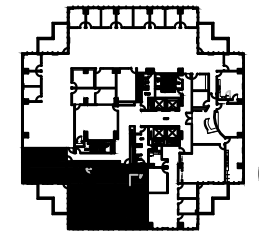


KEY PLAN



SUITE: 1850
RSF: 3,370

TOWER
909

KBS

KIM BROOKS
972.361.1122
kim.brooks@transwestern.com

JUSTIN MILLER
972.361.1134
justin.miller@transwestern.com

SCOTT WALKER
972.774.2504
scott.walker@transwestern.com

